

SREE NARAYANA GURUKULAM COLLEGE OF ENGINEERING

[Affiliated to APJ Abdul Kalam Technological University, Kerala]
Kadayiruppu P O, Ernakulam, Kerala – 682 311

STUDENT CENTRIC METHODS AND ICT TOOLS ENABLED TEACHING FACILITIES

CST 401	Artificial Intelligence (2022-2023)
AY 2022-2023 ODD SEM	S7 A&B 2019-2023 BATCH

Name of the Student Centric Teaching Method	Experiential Learning/problem solving/participatory/ICT
Title of the Activity	PPT with videos
Department	CSE
Program	BTech
Semester	S7
DATE	2022-2023 odd semester

With the old Chalk and Talk method, it is difficult to effectively convey many of the concepts and algorithms in AI. Information and Communication Technology (ICT) can play a crucial role in implementing a student-centric approach to teaching and learning in the subject of Artificial Intelligence (AI).

1. PPT were used to understand the concept of different toy problems in AI

A. Anon
PRINCIPAL
Sree Narayana Gurukulam
College of Engineering
Kadayiruppu, Kerala



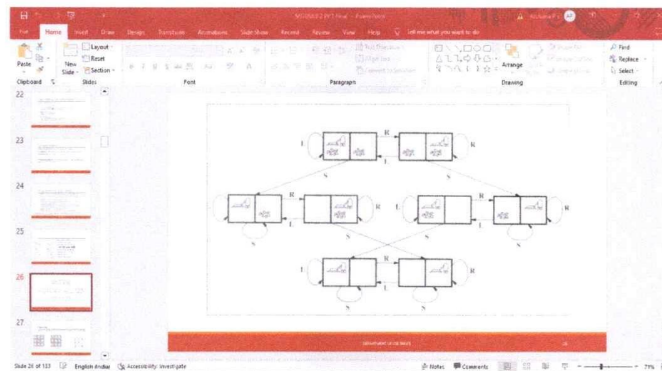
SREE NARAYANA GURUKULAM COLLEGE OF ENGINEERING

[Affiliated to APJ Abdul Kalam Technological University, Kerala]

Kadayiruppu P O, Ernakulam, Kerala – 682 311

Click to add title

- Number of states: 8
- Initial state: Any
- Number of actions: 4
 - left, right, suck, noOp
- Goal: clean up all dirt
- Goal states: {7, 8}
- Path Cost:
 - Each step costs 1



8-puzzle

A tile adjacent to the blank space can slide into the space. The object is to reach a specified goal state.

7	2	4
5	6	
8	3	1

Start state

1	2	
3	4	5
6	7	8

Goal state

1	2	
3	4	5
6	7	8

A. Hesa
PRINCIPAL
Sree Narayana Gurukulam
College of Engineering
Kadayiruppu, Kolenchery-682 311



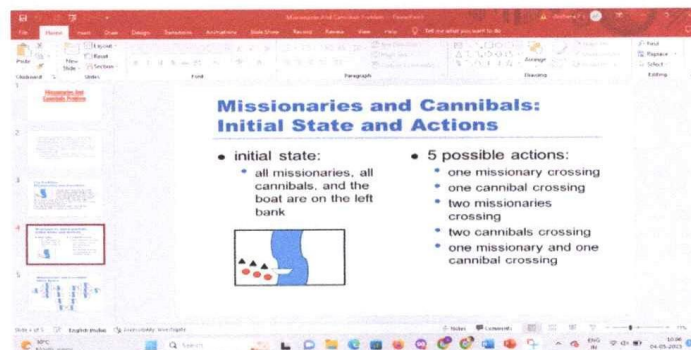
SREE NARAYANA GURUKULAM COLLEGE OF ENGINEERING

[Affiliated to APJ Abdul Kalam Technological University, Kerala]
Kadayiruppu P O, Ernakulam, Kerala – 682 311

2. For better understanding of 8 puzzle problem GIF solutions are used

1	2	5
3	4	
6	7	8

3. PPT with video were used to demonstrate Missionaries and cannibal problem.



Animated video link used:

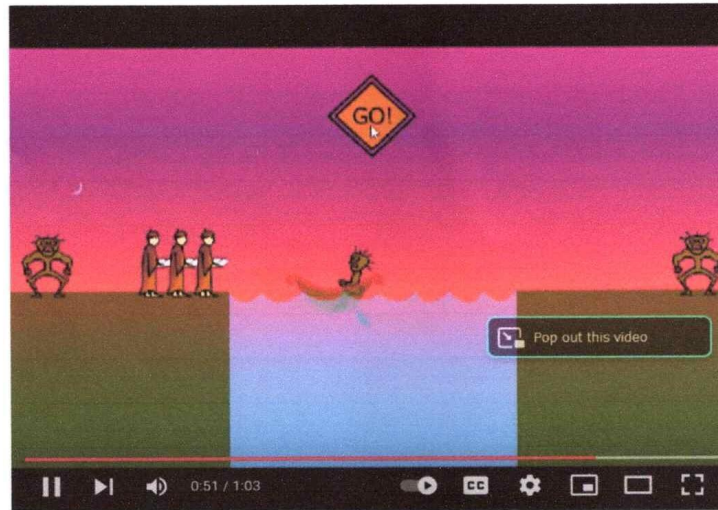
<https://youtu.be/laLS8gHzROg>


PRINCIPAL
Sree Narayana Gurukulam
College of Engineering
Kadayiruppu, Kolenchery-682 311



SREE NARAYANA GURUKULAM COLLEGE OF ENGINEERING

[Affiliated to APJ Abdul Kalam Technological University, Kerala]
Kadayiruppu P O, Ernakulam, Kerala – 682 311

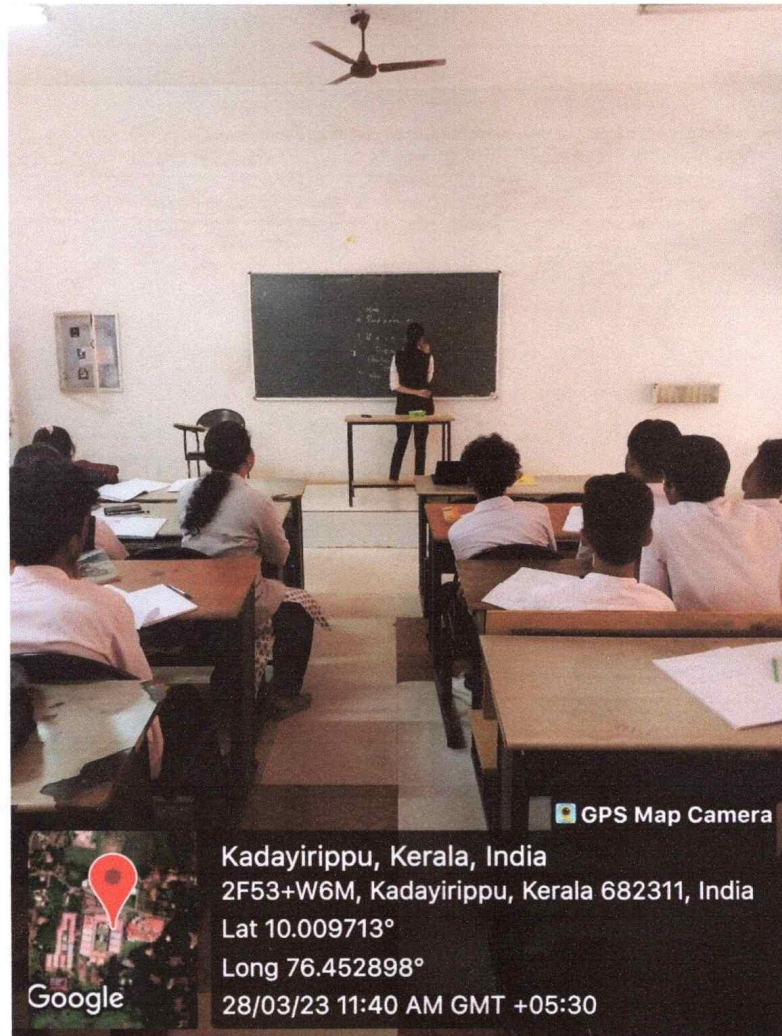



PRINCIPAL
Sree Narayana Gurukulam
College of Engineering
Kadayiruppu, Kolenchery-682 311



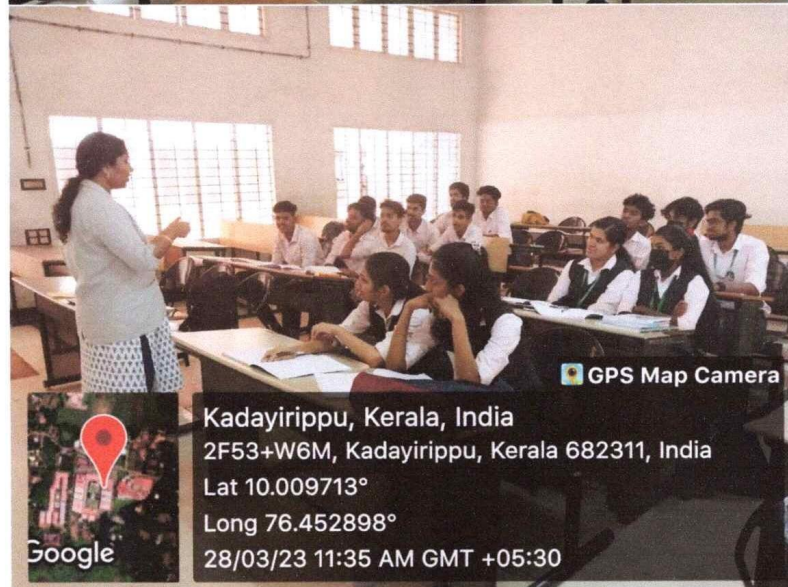
SREE NARAYANA GURUKULAM COLLEGE OF ENGINEERING

[Affiliated to APJ Abdul Kalam Technological University, Kerala]
Kadayiruppu P O, Ernakulam, Kerala – 682 311



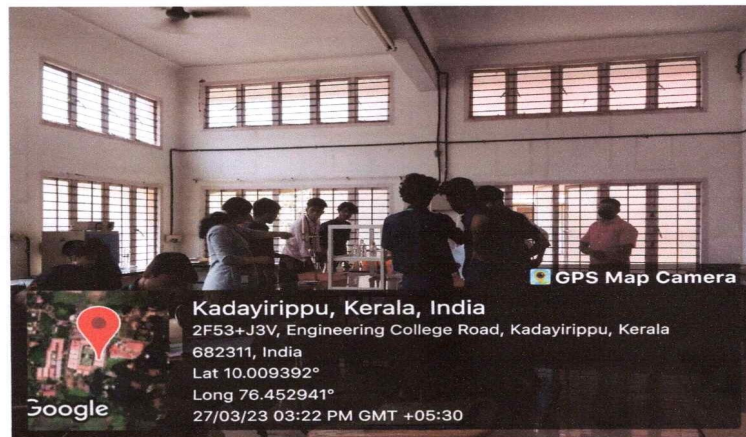
SREE NARAYANA GURUKULAM COLLEGE OF ENGINEERING

[Affiliated to APJ Abdul Kalam Technological University, Kerala]
Kadayiruppu P O, Ernakulam, Kerala – 682 311



SREE NARAYANA GURUKULAM COLLEGE OF ENGINEERING

[Affiliated to APJ Abdul Kalam Technological University, Kerala]
Kadayiruppu P O, Ernakulam, Kerala – 682 311



SREE NARAYANA GURUKULAM COLLEGE OF ENGINEERING

[Affiliated to APJ Abdul Kalam Technological University, Kerala]

Kadayiruppu P O, Ernakulam, Kerala – 682 311